

BRENT SEND NEWS

FOR PARENTS, CARERS AND PROFESSIONALS



GREETINGS



Shirley Parks
Director, Education, Partnerships and Strategy

It's hard to believe that we are now in December and the Christmas holiday period will soon be here!

Sharon Buckby left her role as Head of Inclusion at the end of October. I know that Sharon was immensely proud of her achievements over the past three years working with schools and other partners and takes with her many wonderful memories of her time in Brent.

While we are planning and progressing long-term arrangements for the leadership of the service, Michaela Richards and Louise Bartos, Service Managers in

the Inclusion Service, have agreed to take on some additional leadership and management responsibilities on an interim basis.

Michaela will be responsible for the Inclusion Team and the Early Years Inclusion Support Team and will step up as Acting Headteacher of Brent Virtual School. Louise will be responsible for all SEND support services (BDHIT, BIVS, BOAT and STAR) and various health programmes. They will also be leading a number of development workstreams.

Wishing you a restful holiday when it comes.

Shirley



SEND STRATEGY

The vision in the SEND Strategy 2021-2025 that we want our children and young people to be able to 'Dream big, achieve well, have choice, control, and lead happy fulfilled lives, sets a clear ambition for the area partnership

The priorities within the strategy have shaped a clear set of actions that were co-produced with young people, parents and carers (via the Brent Parent Carer Forum) and Children's Trust partners. The priorities directly respond to the ambitions for children in Brent identified through the consultation undertaken between January and May 2021, involving over 500 children, young people, their parents and carers and those who support young people.

The four Preparation for Adulthood outcomes as outlined in the Code of Practice 2015 form the framework for the strategy:

1. Education, employment and training
2. To live a healthy lifestyle
3. To be fully active citizens of Brent.
4. To live independently

The aim of this approach is to ensure that activity is focused on encouraging a smoother pathway into adulthood and the partnership enables young people to build on life skills to support them to achieve their aspirations.

In addition, a further priority is included in the Strategy - 'My Brent'. This reflects the clear voice of young people. This is their borough and they want their voices to be heard in shaping the Brent of the future.



You can find an update on implementation of the strategy and progress that has been made on the Local Offer www.brent.gov.uk/children-young-people-and-families/send-local-offer/local-offer-news-and-events.

We want our children and young people to be able to 'Dream big, achieve well, have choice, control, and lead happy fulfilled lives'

Thank you to parents, carers and young people for the contributions that they have made to date.

The priorities for academic year 2023/24 are:

- a) for the Inclusion Service to undertake an evaluation of the impact of implementation of the strategy to date
- b) to strengthen awareness of the offer for young people in Brent through the multi-agency Local Offer working group
- c) to deliver on the ICP priorities for children and young people, with a focus on therapies and mental health provision
- d) to deliver sufficiency of educational provision
- e) to improve and expand the voice of young people across the area partnership.

DEVELOPMENTAL LANGUAGE DISORDER DAY 2023

Developmental Language Disorder Day 2023

The Brent Paediatric Speech and Language Therapy (SLT) Service is doing a brilliant job in raising awareness of Developmental Language Disorder (DLD). DLD Awareness Day was held on Friday 20th October 2023. The mainstream schools' SLT team decided to celebrate DLD for the whole week (commencing 16th October) in local schools ending with the official DLD day on the Friday. The SLT Team encouraged mainstream primary and secondary schools in Brent to get on board, as they wore yellow and purple to mark the occasion. The 2023 DLD Day theme is DLD Around the World, highlighting that DLD occurs in every language.

What is DLD and how common is it?

Developmental Language Disorder is a hidden but common disability that affects 1 in 14 people causing difficulties understanding and using language for no known reason. On average, DLD affects 2 children in every classroom. DLD can affect children in different areas, such as with their literacy, learning, friendships and emotional well-being. Children with DLD often have difficulty understanding what people say to them and struggle to articulate their ideas and feelings.

What causes DLD?

There is no known cause of DLD, although it tends to run in families. Twin studies

indicate strong genetic influence on DLD, but this seems to reflect the combined impact of many genes, rather than a specific mutation (Bishop, 2006). DLD is not caused by parents or those who are around the child. DLD occurs in all languages spoken by the child and is NOT caused by bilingualism/multilingualism.

How to help someone with DLD

Support from professionals, including speech and language therapists and teachers, can make a real difference. Speech and Language Therapists work closely with school staff and parents of children with DLD to ensure they are well supported to use and understand language to the best of their ability.

For further information, see the RADLD website here: <https://radld.org/>

To check out the Brent Speech and Language Instagram page, please follow @CLCHBrentSLT



BRENT LIBRARIES

In September, a new volunteer with additional needs, together with their support worker visited the LA with a view to volunteering within the Library Service. The volunteer now helps on a regular basis with Brent Libraries Outreach Team.

Starting in November, three students from Woodfield Special school have also been gaining some valuable work experience at the Library at Willesden Green.

Volunteers carry out tasks such as returning books on the self-service machine and

shelving returned books.

In addition to offering regular book provisions to The Village School, Brent Libraries has collaborated in setting up a small community bookcase at the Ade Adepitan Short Break Centre in Kingsbury.

As part of the Library Service's commitment to SEND inclusion, more touch-feel, audio and large print books have been included into the stock.

A regular BookStart targeted provision for SEND is also coordinated through libraries

reaching out to school and centres such as Brent Deaf and Hearing Support Service (BDHSS). Currently, the BookStart scheme involves welcome packs for babies that are given out through libraries and Family Wellbeing Centres. There are also SEN packs given out through centres such as Willow Family Wellbeing Centre and nursery and Brent Deaf and Hearing Support Services. Some SEN schools such as The Village School also give out packs, coordinated via Brent's Outreach Services.

BRANCHING OUT CAREERS EVENT

The Civic Centre was host to parents and young people mainly aged 14 – 25 with SEND at a special Careers Event recently in November. More than a hundred young people with Special Educational Needs or Disabilities (SEND) attended the annual Branching Out Event.

The event was held in partnership with Prospects who provide information, advice and guidance to support the future career and

educational aspirations of unemployed young people in Brent aged 16 to 19 (up to 25 for those with a learning difficulty and/or disability).

Over 30 local organisations, including Brent Works, The College of Northwest London, The Shaw Trust, MENCAP and The Living Room, highlighted the employment opportunities, supported internships and apprenticeships that are on offer to young people with

SEND in Brent.

The event was well attended by almost 300 Brent residents. A young person who attended said: "Attending this event has helped me and my mum with deciding on my future plans. Before today, I didn't know these organisations existed and there was more than enough information available to help me. I hope there is an event like this every year."



NEURODIVERSITY IN BRENT



Parents can visit the Neurodiversity section on the Local Offer page where they can find help and advice to support the needs of their child at all stages of their neurodiverse journey. Just

click the link www.brent.gov.uk/children-young-people-and-families/send-local-offer/neurodiversity#neurodiversity

SHORT BREAKS STATEMENT

Short breaks allow children and young people with special educational needs and disabilities (SEND) to take part in a range of mainstream and specialist activities and experience something new. The aim is that they enjoy themselves, while parents have the opportunity to have a break from caring responsibilities.

Local Authorities have a duty to produce a short breaks statement that enables families, carers and young people to understand the services that are available to them in Brent and the eligibility criteria for these services.

Brent's Short Breaks Statement and further information on the Brent Council website can be found [here](#).

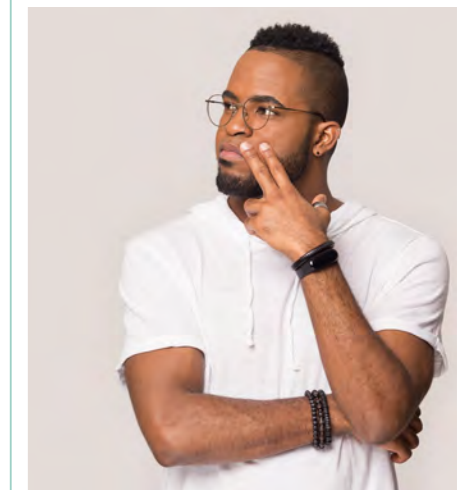
LOCAL OFFER UPDATES

The Local Offer provides information and advice for children and young people with special educational needs and disabilities (SEND) aged 0-25, and their families in one place. It sets out what support is available for 0-25 year olds with SEND ranging from activities to information that explains local provision available, and where to go for independent advice.

Information on the Local Offer is continually updated to ensure the information on the Local Offer is accessible, up to date and relevant. In 2024 we will focus on ensuring there is up to date information in the directory, social care and health and wellbeing section

as well as review navigation around the Local Offer site and how we inform you of news and events. We would like the views of parents and families to help shape this work, if you are interested in being involved please contact Brent Parent Carer Forum, or email us at localoffer@brent.gov.uk

Brent's Local Offer can be found here. www.brent.gov.uk/children-young-people-and-families/send-local-offer



BRENT FATHERS SUPPORT GROUP

The Wembley Stadium Learning Zone has worked in partnership with Mandeville School for many years, facilitating visits for student with SLD, PMLD and ASC, as well as their parents. These visits have been hugely successful, with parents often reflecting that they 'never imagined being able to bring their children to such an iconic venue'.

Being a parent or carer of a child with autism can sometimes feel daunting and overwhelming. For fathers especially, this experience can feel isolating and there can be a lack of social support. Parents of children with SEND often suffer from a perceived social stigma concerning their children and as a result, are afraid to share new places or ➔

experiences with them. Recognising the needs of fathers of autistic children and the unique challenges that they face, a group has been set up in Brent known as Fathers of ASC.

The aim of this group is to create an open and non-judgmental space where fathers can share their experiences and feel that they are listened to, are able to ask questions and that their voices are heard. They talk openly and support each other. They can also share knowledge, challenging misconceptions and expectations. Through peer support and social interaction they empower each other.

As well as their meetings, the group have also organised some autism friendly days out,

that have been an extremely positive experience for the fathers and their children. Not only have they had fun, but they have had fun together and shared an experience that was both enjoyable and inclusive.

This much needed support group for fathers will be starting up again in January 2024.

If you would like to find out more about accessing this programme, please contact Rajan Anand, Manager, Wembley Stadium Learning Zone. Email rajan.anand@brent.gov.uk

HOLIDAY ACTIVITIES AND FOOD PROGRAMME
Brent children and young

people (Reception to year 11) can access the Holiday Activities and Food (HAF) Programme over the winter school holidays. The programme is for children and young people in receipt of benefit-related free school meals. There are also spaces available for children and young people with SEND.

A wide range of fun and engaging activities will take place including sports, crafts, drumming, music, drama and more, helping Brent's children to stay active and have fun. Children and young people will also be able to enjoy nutritious meals each day.

Information on providers and how to book can be found on the Brent HAF website in the weeks leading to Christmas: www.brent.gov.uk/haf

ANTI BULLYING WEEK AND THE RSHE NETWORK

Anti-Bullying Week 2023
13-17 November 2023 marked national Anti-Bullying Week. To launch this year's campaign, Nigel Chapman attended a poignant assembly at Preston Manor Lower School where he shared his own personal experiences and promoted the important message 'Make a Noise About Bullying'. His speech was followed by a screening of this year's anti-bullying video which features Brent primary school pupils further emphasising the importance of kindness, courage and taking a stand against bullying behaviours.

In order to support schools in their delivery of anti-bullying week, the Inclusion Team has produced a bespoke pack of lesson resources designed to build empathy and understanding amongst young

people. Tackling topics such as cyberbullying, disablist language and autism awareness, this pack will be invaluable to schools not just during anti-bullying week but throughout the year as part of their core RSHE curriculum.

Finally, throughout the week young people were invited to send in their anti-bullying work (be that writing, drawing, painting or sculpture) for the chance to be featured in the Your Brent magazine which

reaches over 100,000 households across Brent! The selected pieces of work will appear in the December edition.

RSHE (Relationships, Sex and Health Education) Network

Following a fruitful network meeting in October, half termly meetings of the RSHE schools' network are being planned to share best practice, develop new resources and to help schools stay on top of changes to statutory guidance.

Representatives have expressed a need for more staff training in this area and so training materials are being developed in-house to be disseminated and delivered in school settings. These resources will support network representatives to upskill their staff and build confidence in delivering this new area of the compulsory curriculum.



FAMILY WELLBEING CENTRES

Family Wellbeing Centres (FWC) have a range of services and support for families with SEND children and families struggling with different issues, such as the cost of living crisis, parenting or health and wellbeing concerns. They also have activities for children after school and during school holidays.

Centres are open Monday to Friday, 9am to 5pm, and some evenings and weekends.

SEND family group play sessions for children with SEND, their siblings and parents/carers take place on Saturdays at different Family Wellbeing Centres across the borough. Find out more and book your place by registering at www.brent.gov.uk/familywellbeingcentres

WE WANT TO HEAR FROM YOUNG PEOPLE WITH SEND

The Inclusion Service would like to develop a Youth Forum for young people with SEND, aged 14-25 years. We are interested in hearing about the best ways for us to communicate with young people and get their views on what would help improve the service. We will be reaching out in January 2024 to hear about young people's views on the SEND Strategy.

Following on from the success of the Branching Out event we would like to organise another in person event for sometime in the Spring of 2024 offering the

opportunity for young people to find out more information about support for their health and well-being.

Brent Parent Carer Forum provides a great service supporting parents of children



Alperton FWC
Alperton.FWC@brent.gov.uk

Church Lane FWC
ChurchLane.FWC@brent.gov.uk

Curzon Crescent and Fawood FWC
admin@curzon.brent.sch.uk

Fawood
admin@fawoodcc.brent.sch.uk

Granville Plus FWC
GranvillePlus.FWC@brent.gov.uk

Preston Park FWC
PrestonPark.FWC@brent.gov.uk

St Raphael's FWC
StRaphs.FWC@brent.gov.uk

Three Trees FWC
ThreeTrees.FWC@brent.gov.uk

Willow SEND FWC
Willow.FWC@brent.gov.uk



with SEND and representing their views in a wide range of service development work. It would be amazing for us to develop something similar for children and young people with SEND, where their experiences and voice can be heard and they are involved in developing what we do.

It will take time for this to grow and become embedded in everything. The first steps we would like to take are hearing about what young people would like from the events we are planning for 2024. If you are interested in taking part please get in touch with us first by emailing brentyouthzone@brent.gov.uk

WINTER ACTIVITIES

WINTER HOLIDAY CLUBS FOR CHILDREN

Junior Adventures Group (JAG) will be running a holiday sports club this winter in Brent. With a mix of sports, energising activities that get children moving, creative sessions that bring out their inner inventor and much more, they aim to help children build social, emotional and interpersonal skills in a safe and exciting environment.

Junior Adventure Group use a Whole of Child approach and multi-activity programming, to ensure children leave clubs with social, emotional and interpersonal skills that prepare them for life. No day is ever the same with activities split into seven categories: Creative Inventors, Super Sports, Power Teams, Global Kids, Zen Masters, Brain Boosters and Splash Zone.

WILLESDEN SPORTS CENTRE

Ages 5-12
Fri 22 Dec-Fri 5 Jan (8.30am-5.30pm)
Donnington Road, Willesden,
London NW10 3QX.
Cost: £39.50 per session (use code
WINTERSAVE10 for 10% discount)

HAF Winter Holiday Club 23

Tue 2 Jan-Fri 5 Jan
10am-2pm. Subject to availability
1:1 assistance available depending on
location/staff availability, please call them
prior to booking for further information.

The Winter Holiday Club

Full Day runs from
22 Dec-Fri 5 Jan at 8.30 am-5.30pm
and costs £39.50.
Find out more at: [Willesden Sports Centre, Junior Adventures Group UK](#)
For any queries, please contact:
SENDSCO@junioradventuresgroup.co.uk
hello@junioradventuresgroup.co.uk
Or call 0333 577 1533

VALE FARM SPORTS CENTRE

Ages 5-12yrs
Tue 2 Jan-Fri 5 Jan
Watford Road, North Wembley HA0 3HG
Cost: £37.65 per session (use code
WINTERSAVE10 for 10%discount)
HAF spaces also available subject to
availability (10am-3pm)
1:1 assistance available depending on
location/staff availability, please call them
prior to booking for further information.
Additional charge for a carer is £15 p/h.
Find out more at :
[Vale Farm Sports Centre, Junior Adventures Group UK](#)
For any queries, please contact:
SENDSCO@junioradventuresgroup.co.uk
hello@junioradventuresgroup.co.uk
Or call 0333 577 1533

MOBERLY SPORTS CENTRE

Ages 5-12
Fri 22 Dec-Fri 5 Jan (8.30am to 5.30pm)
25 Chamberlayne Rd, London NW10 3NB
Cost: £38.55 per session (use code
WINTERSAVE10 for 10% discount)
1:1 assistance available depending on
location/staff availability.
Additional charge for a carer is £15 p/h.
For any queries, please contact:
SENDSCO@junioradventuresgroup.co.uk
hello@junioradventuresgroup.co.uk
Find out more here: [Moberly Sports Centre, Junior Adventures Group UK](#)



INFLATANATION

Ages 4+ £13.50 per person (free for carers)
Unit 1, Colindale Retail Park,
355 Edgware Road, London, NW9 6TH
Disability friendly sessions:
This indoor inflatable theme park offers
disability friendly sessions. These sessions
are designed specifically for those people
on the autistic spectrum and their families
to enjoy. Not only does this provide an
opportunity for children to have fun and
be physically active, but these sessions
also provide an opportunity for families
to meet other families facing similar paths
in a fun and safe environment.
www.inflatanation.com/classes/disability-friendly/
Or call 0161 710 2360 for further
information and booking.

PARTYMAN WORLD OF PLAY

Ages 5-12
Last Sunday of the month is an inclusive
session.
SEND Session: The next session will be
Sunday 17 December 2023. Time: 9-10am
£5 per child (Up to age 12)
1 free carer ticket
Vale Farm Sports & Leisure Centre,
Watford Rd, Wembley, HA0 3HG
For more information visit
www.partymanworld.co.uk/location/wembley/admissions/sen/

FLIP OUT TRAMPOLINING BRENT CROSS

Suitable for all ages
Every Saturday 9-10am (SEND Session)
£9 per person (Free for carers)
Unit 7, Staples Corner Retail Park,
Geron Way, Brent Cross,
London NW2 6LW
For more information and bookings,
please click here www.flipout.co.uk/locations/brent-cross/attractions

LET'S UNITE FOR AUTISM: SEN MULTI-SPORTS SESSION

The session will be multi-sport for young
people aged 9-15.
Saturdays 12-2pm This session is free to
attend. Roundwood Community Centre
49 Longstone Ave, London NW10 3UN
For more information, please click [here](#)

SPORTS ABILITY SESSIONS

Inclusive sports sessions running in Brent
for ages 8+
Saturdays from 3pm-5.30pm
The cost per session is £3.00 children;
£5.00 adult or £25.00 for 10 weeks
(children) and £40.00 for 10 weeks (adult).
Bridge Park Community Leisure Centre,
NW10 0RG
Contact: 020 8937 3730
Email: BRIDGEPARKCLC@brent.gov.uk
For more details click [here](#)

KEEN LONDON - BRENT

Ages 5-11
Every Saturday during term time
Sessions run for 90 minutes and will involve
a mixture of playground games, creative
activities and outside nature play.
Keen London currently support children
with a wide range of additional needs who
require varying levels of support.
For Keen Club members they also run day
trips throughout the year, a residential
trip and summer and Christmas parties.
For more information and registration
[click here](#)



GINGERBREAD MAKING WORKSHOPS

30 November at 5pm
7, 14 and 21 December at 5pm
Fenwick Brent Cross:
Restaurant on 3, Third Floor
Brent Cross Shopping Centre,
Prince Charles Drive, Brent Cross,
London NW4 3FP

These gingerbread-making workshops are the perfect way to get your child and yourself into a festive mood. Whether you are batch-making cookies to gift, or to eat straight away, you're in for a creative baking experience. Tickets are £15 per person. Book this workshop by clicking [here](#)



CHILDREN'S CHRISTMAS PLATE DECORATING WORKSHOPS

Thursday 14 December: 5-6pm
Thursday 21 December: 5-6pm
Brent Cross Shopping Centre
Prince Charles Drive, Brent Cross,
London NW4 3FP
Join the team at Fenwick Brent Cross

for their creative plate decorating workshops. Ideal as a personalised gift for the grandparents or something to display proudly in their room.



In this festive and interactive workshop, every child will have a collection of festive stencils and colours to work with to create something unique. Tickets cost £9.50 each for both adults and children (includes mulled wine or spiced apple juice and mince pie for adults and milk or juice and warm cookies for children) Children under 2 go free – please advise any under 2s on your booking notes. You can book this Workshop by [here](#)

WEMBLEY PARK

2 December 2023 until
2 January 2024,
10 am-9 pm Free
Olympic Way, Wembley Park, Wembley.
Taking a stroll around Wembley Park is an activity you can do for free this winter. You can take in the festive air while enjoying art installations, winter markets, live choirs and more this Christmas! The Luminaze is a brand-new light-based interactive maze is heading to Wembley Park to wow visitors of all ages.

BLADDER AND BOWEL UK (CONTINENCE CHARITY)

Thurs 11 Jan 12.30 to 1.30pm via zoom.
Primary care training. Free.
"The prevalence and impact of bedwetting, the causes and the treatment options for all children, including those with additional needs. The session will be based on the latest evidence and NICE guidance."
[Lunchtime Learning -Enuresis training - Bladder & Bowel UK \(bbuk.org.uk\)](#)

THE BRENT PLAY ASSOCIATION

Brent Play Association is a local charity that provides a wide range of services and opportunities for children, including those with special educational needs and disabilities (SEND). After school, holiday and weekend provision is available for children and young people with SEND. Emergency respite is also offered six days a week. During term-time the charity also provides services for children and young people who have been excluded from school or college or have yet to be allocated a suitable place, as well as young people requiring specialist support (by arrangement). Its premises are wheelchair accessible and complete with a kitchen, music, art and sensory rooms and outside play area. They provide services for a wide age range, from 0-20 years old. Ground floor, Peppermint Heights, Northwick Road, Wembley HA0 1LG [Visit the Brent Play website](#) to find out more information.

ACTIVITIES FOR YOUNG ADULTS

Action Space Art Project in Barham Park
16-30 years old
Every Thursday, 12.30-3.30pm
Free studio sessions for young people and adults with learning disabilities to develop and pursue their artistic talent. For booking details see local offer click [here](#) for the link.

Free track sessions

19-25 with a physical or learning disability?
Willesden Sports Centre.
Donnington Rd,
London NW10 3QX
11am-12.30pm.

Come to our dedicated run, jump, throw sessions on Fridays.
Email GRACE.VEYS@TRACKACADEMY.CO.UK or call **07399 229665** to book.

ACCESSIBLE CINEMA

If you and your child want to catch a movie in an inclusive cinema this holiday season, this is available in Brent.

Cineworld Cinema-Wembley

Autism friendly screenings on first Sunday of the month
For more information and to book tickets visit their website [here](#)

The Lexi Cinema-Kensal Rise

194b Chamberlayne Rd,
London NW10 3JU
The Lexi cinema offers relaxed and accessible screenings of films.

Relaxed screenings

The Lexi cinema screen films from their main programme in a more relaxed environment, with better lighting and lower sound volumes. They indicate if a screening is a Relaxed/Autism-friendly screening by marking it as "RS" next to the film's start time. Those with access needs will be charged the usual price for any screening. However carers go free. They also run screenings with closed captions regularly. Audio Description is available for some films. They will indicate if a film has Audio Description available at the bottom of the text on the film's page on the website or ask a member of staff at the Box Office and they will let you know.

Please click [here](#) for further information. and to book seats.

Are you 16-25 years
old in Brent?



Mental Health Toolkit Weekly Workshops

Starting October 2023

- * Looking to build resilience?
- * Get creative?
- * Learn and understand coping mechanisms?
- * Manage your anxiety & stress?
- * Understand your emotions?
- * Problem solving & goal setting?

Just to name a few!

Want to participate?

E-mail your interest to:
Hemal.Vaid@rethink.org

We are excited to hear
from you!

For further information on
Rethink Mental Illness
Phone 0300 5000 927
Email info@rethink.org

NHS
Central and
North West
London
NHS Foundation Trust

rethink.org

Rethink Mental Illness, a company limited by guarantee. Registered in England Number 1227970.
Registered Charity Number 271028. Registered Office 28 Albert Embankment, London, SE1 7GR.
Authorised and regulated by the Financial Conduct Authority (Firm Registration Number 624502). © Rethink
Mental Illness 2023.

**Rethink
Mental
Illness.**