

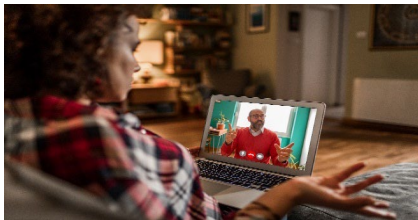


## **Brent Parent Carer Forum CIC hosts parents' workshops in partnership with Health, Education and Social Care - dates for your dairies!**

**February – July 2024**

### **Dear Parent Carer**

We are pleased to let you know about several workshops we are hosting in partnership with Health, Social Care and Education.



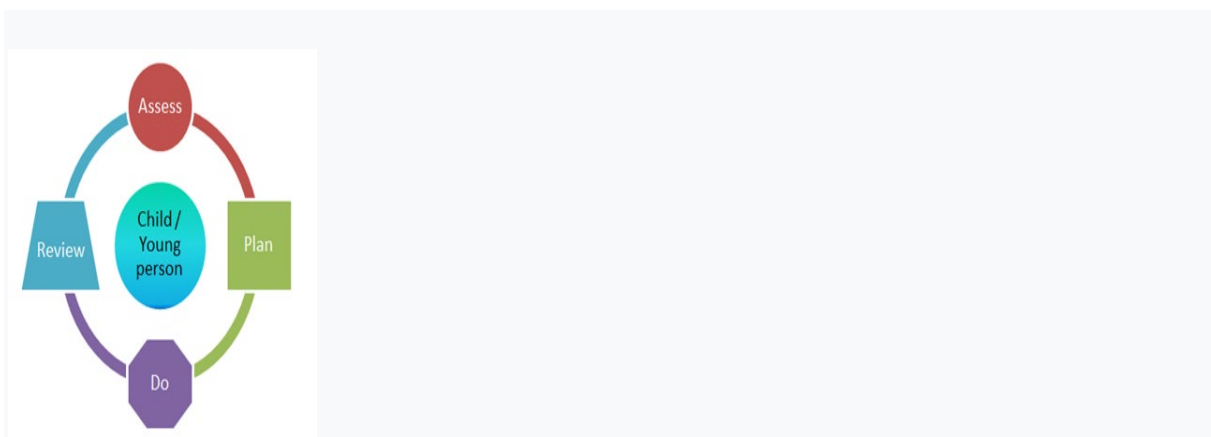
Following on from the success of previous workshops and requests from parents to host new workshops in a number of different areas for the next year.

We add to this rolling calendar of workshops regularly . If you would like to be kept up to date about what we do, our meetings and events – become a member.

<https://brentpcf.org/become-a-member/>

<https://chat.whatsapp.com/FkK5ph5qGXe692WsSgK6Xu>

If you have any questions about any of the workshops, please email us at [admin@brentpcf.org](mailto:admin@brentpcf.org) or call me on 07852101492 Carol Parent Participation Worker BPCF



### **1. Understanding SEND Support and the Graduated Approach**

Tuesday 6<sup>th</sup> February 2024 at 10am-12noon online – daytime session

<https://www.eventbrite.co.uk/e/understanding-send-support-and-the-graduated-approach-parents-workshop-tickets-788968374647>

Tuesday 6<sup>th</sup> February 2024 at 7pm-8.30pm online – evening session

<https://www.eventbrite.co.uk/e/understanding-send-support-and-the-graduated-approach-evening-workshop-tickets-788985706487>

Children and young people with SEN all have learning difficulties or disabilities that make it harder for them to learn than most children and young people of the same age. These children and young people may need extra or different help from that given to others

SEN support

Any support your child gets from their school or other setting should meet their needs. If your child has SEN, they will be able to access help – called SEN support – from their Early years settings, such as nurseries or childminders (Support for the under 5s), schools (see section in this guide on Support for children of school age) and further education institutions (see section in this guide on Young people Aged 16 and over in further education) such as colleges and 16-19 academies. SEN support replaces school action/school action plus (in schools) and early years action/early years action plus (in early years settings).

This workshop will tell you how schools should be supporting your child and be working in partnership with you. This workshop will also provide you with suggestions of those different questions you should ask when visiting early years setting and schools.



## **2. Understanding the Resource allocation system (RAS) in Social Care – Brent**

Tuesday 27<sup>th</sup> February 2024 10-12noon

<https://www.eventbrite.co.uk/e/understanding-the-resource-allocation-system-ras-in-social-care-brent-tickets-789007531767>

Wednesday 6<sup>th</sup> March 2023 7-8.30pm evening session

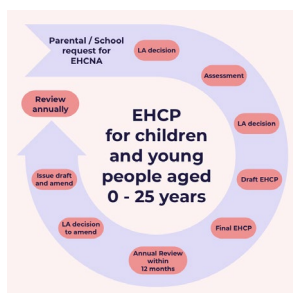
<https://www.eventbrite.co.uk/e/understanding-the-resource-allocation-system-ras-in-brent-evening-tickets-789018193657>

Join this session to gain a better understanding of the RAS in Brent .

- What is RAS
- Who may be eligible
- What is the process
- How decisions are made

For children and young people who may need additional support, a Resource Allocation System provides a set of parameters or rules to be applied that allows fair allocation. In effect, RAS connects a particular level of need with a particular level of funding. This could be funding given directly to the setting or situations where young people or families have opted for a personal budget.

The decision about the level of specialist short breaks or support / care package a child/young person is eligible for is determined at the Disabled Children and Young People Panel. The panel sits weekly to decide about the level of support your child needs to achieve the outcomes which are set out in the Education Health and Care Plan/Annual review, Child in Need Plan, Short Break Plan or the Child and Family Assessment, Care and Support Plan and Preparation for Adulthood agenda.



### 3. Applying for a Needs Assessment – EHCP

Tuesday 19<sup>th</sup> March 2023 10am-12noon online

<https://www.eventbrite.co.uk/e/parents-workshop-applying-for-a-ehcp-needs-assessment-tickets-789060289567>

Wednesday 27<sup>th</sup> March 2024 7pm- 830pm evening online

<https://www.eventbrite.co.uk/e/parents-workshop-applying-for-a-ehcp-needs-assessment-evening-session-tickets-789084632377>

Some children with special educational needs (SEN) in England need more help than a mainstream school, college or nursery would normally provide at the level of SEN support

These pupils receive support through an Education, Health and Care (EHC) plan.

Children who needs are so complex may need to attend a Specialist setting which would require a EHC plan to be in place .

Join our workshop to hear in more detail about the process .

### **What is an EHC plan?**

An Education, Health and Care (EHC) plan is a legal document that describes a child or young person’s special educational, health and social care needs, explains the extra help that will be given to meet those needs and how that help will support the child or young person to achieve what they want to in their life.

### **Who may need an EHC plan?**

EHC plans are for children and young people whose special educational needs require more help than would normally be provided in a mainstream education setting (a college, school, nursery).

Although the plan can include health or social care needs, your child will not get a plan if they only have health or social care needs that do not affect their education.

An EHC plan can be issued to a child or young person between the ages of 0 and 25 years.

### **How do I get an EHC plan?**

EHC plans are drawn up by the local authority after an EHC needs assessment. You, your child’s education setting or your child, if over 16, can ask your local authority to carry out an assessment.



#### **4. New Beginnings- supporting the move to big school for parents – Early Years.**

Wednesday 24<sup>th</sup> April 2024 10-12 noon online

<https://www.eventbrite.co.uk/e/new-beginningssupporting-the-move-to-big-school-tickets-789033529527>

evening session to be confirmed.

Have you been thinking about your son/ daughter starting big school!

Starting school is an exciting time for young children and their parents. It can be a daunting time, too, especially when you son/ daughter has special educational needs and disabilities (SEND) ,with preparation and encouragement, most children will settle in easily at school.

Join us to hear how your son/ daughter with SEND will be supported to transition from home to nursery. Find out about ways you can prepare your son and daughter for their first day at school

Ask those questions that have been playing on your mind and meet the Early Years inclusion team and hear about ways to support your son/daughter and ask any questions you may have



5. What is an Annual Review of an Education, Health and Social Care (EHC) plan?

Tuesday 30<sup>th</sup> April 2024 10am -12noon online

<https://www.eventbrite.co.uk/e/parents-workshop-understanding-the-annual-review-process-ehcp-tickets-789103488777>

Wednesday 1<sup>st</sup> May 2024 7-8.30pm on line

<https://www.eventbrite.co.uk/e/parents-workshop-understanding-the-annual-review-process-ehcp-evening-tickets-789110810677>

**Join us to learn more about how to prepare for your son's or daughter's annual review**

When a child or young person has an Education, Health and Care plan (EHC plan) there is an ongoing requirement for the EHC plan to be reviewed by the local authority at least annually. This is referred to as the Annual Review. In Early Years an EHC plan should be reviewed every 3 to 6 months (CoP 9.178).

The Annual Review is more than just a review meeting, it is a process that must be completed on or before the anniversary of when the EHC plan was first issued or the

anniversary of the last review. An Annual Review must be undertaken in partnership with the child and their parent or the young person, and must take account of their views, wishes and feelings, including their right to request a Personal Budget.



## **6. Young person's transition annual review.**

**Tuesday 7<sup>th</sup> May 2024 10am -12noon**

<https://www.eventbrite.co.uk/e/bpcf-parents-workshop-young-persons-transition-annual-review-tickets-789119837677>

**Wednesday 8<sup>th</sup> May 2024 7pm -8.30pm**

<https://www.eventbrite.co.uk/e/fbpcf-parents-workshop-young-persons-transition-annual-review-evening-tickets-789124461507>

**Join us to learn more about the purpose and importance of your Son/Daughter's Annual Review at year 9 – transition.**

### **Transition review**

The LA must conduct a 'transition review' when the child or young person is transferring from one stage of education to another. This is to ensure the EHCP accurately describes the child or young person's needs and provides the support they will require in their next placement. It also gives the child or young person and their parents an opportunity to raise any concerns they may have.

The process and timescales for EHCP reviews are outlined in the SEND Regulations 2014. Taking these into account, the review meeting should be early in the autumn term - ideally no later than October. Parents must be given at least two weeks' notice of the meeting date.

The person arranging the meeting must request advice and information about the pupil from parents, the school, the local authority, and healthcare and social services professionals (if appropriate). For the transfer review, it's also a good idea to have updated assessments from therapists or specialist teachers working with the pupil.

Join us and hear more about the importance of this review and have an opportunity to have any questions answered.



## **7. The Role of SENDIASS**

Tuesday 14<sup>th</sup> May 2024 10am -12noon online

<https://www.eventbrite.co.uk/e/the-role-of-sendiaass-tickets-789130920827>

Tuesday 21<sup>st</sup> May 2024 7pm -8.30pm on line

<https://www.eventbrite.co.uk/e/the-role-of-sendiaass-tickets-789142435267>

SENDIASS stands for Special Educational Needs and Disabilities Information Advice and Support Service.

It's a free, impartial, and confidential service offering information to young people with special educational needs and disabilities (SEND) and to their parents and carers.

There is a SENDIAS Service in every local authority in England.

Join us and meet the team and hear how they can support you .



## **9. How to ask the right questions – to get the best results !**

### **How to challenge effectively**

Tuesday 11<sup>th</sup> June 2024 10-11.30am online

<https://www.eventbrite.co.uk/e/-how-to-challenge-effectively-to-create-better-outcomes-for-your-children-tickets-789154972767>

Wednesday 12<sup>th</sup> June 2024 708.30pm online

<https://www.eventbrite.co.uk/e/how-to-challenge-effectively-to-create-better-outcomes-for-your-children-tickets-789162094067>

Every day we are faced with situations where our point of view can be challenged. Being able to present your ideas, and work with others with opposing views. It takes confidence to challenge others. Thinking through your approach can help reduce nervousness about challenging someone and give you a different perspective.

Join us and a member of the SENDIASS TEAM to hear about ways to challenge differences and effectively challenge decisions and situations



### **10 Money Matters- a guide to welfare benefits workshop – day time**

Tuesday 18<sup>th</sup> June 2024 10-12noon online

<https://www.eventbrite.co.uk/e/bpcf-money-matters-guide-to-benefits-workshop-day-time-tickets-789173528267>

Tuesday 18<sup>th</sup> June 2024 7-8.30pm online

<https://www.eventbrite.co.uk/e/bpcf-money-matters-guide-to-benefits-workshop-evening-session-tickets-789188131947>

**Join Brent Hubs to find out about benefits you may be entitled too!**

Find information about financial support for individuals with special educational needs and disabilities and their carers.

What can money matters help you with? There's a range of information and support services available to help you make sure you are making the most of your money. This includes information on budgeting, saving, debt prevention, affordable credit, benefit entitlement, moving from benefits into employment and energy best deals.

All disability benefits. Links to Universal Credit

Changes to benefits when a disability young person turns 16 [www.brent.gov.uk](http://www.brent.gov.uk) | [www.brenthubs.com](http://www.brenthubs.com)





## 11. Understanding and managing Behaviours that may challenge ?

Tuesday 2<sup>nd</sup> July 2024 10-12pm online

<https://www.eventbrite.co.uk/e/understanding-and-managing-behaviours-that-may-challenge-tickets-795383311897>

Wednesday 3<sup>rd</sup> July 2024 7-8.30pm online

<https://www.eventbrite.co.uk/e/understanding-and-managing-behaviours-that-may-challenge-eve-session-tickets-795394415107>

As all children grow up there are times when they show difficult or inappropriate behaviour.

Understanding the function of the behaviour that challenges When to intervene to stop the behaviour

When is it safe to leave the child/young person to calm?

What are proactive and reactive strategies?

Is there anything else I can do?



## 11. The Role of the SENCO – Special Educational Needs Coordinator

**Details coming soon to be kept up to date join BPCF [Become a member – BRENT PARENT CARERS CIC \(brentpcf.org\)](#) or email [admin@brentpcf.org](mailto:admin@brentpcf.org)**

Join us to find out more about the role and responsibilities of the SENCO

The SENCO has a **critical role** to play in ensuring that children with special educational needs and disabilities within a school receive the support they need.

Gradually over the years the status and import of the **role has developed** with successive guidance validating and substantiating the role.

In the most recent Code of Practice, the SENCO must be a qualified teacher (why ever were they not!) and a newly appointed SENCO must achieve a National award in Special Educational Needs Coordination within three years of appointment.

The SENCO has 'an important role to play with the headteacher and governing body in determining the strategic development of SEN policy and provision and will be most effective if they are part of the school leadership team'.

If you have any questions or have suggestions and requests for other workshops

please email [admin@brentpcf.org](mailto:admin@brentpcf.org)

**Coming soon - more details to follow !**

- Understanding Mental Capacity, lasting power of attorney and appointeeship
- When to start, and what to consider and how to prepare for the transition from early years to primary school .
- The role of Social Care
- When to start and what to consider and how to prepare for the transition from primary to secondary school.
- Cost of living – where to go for support and advice.
- Early Intervention – understanding the Thrive model.
- Sleep hygiene
- Introduction to Brent Family wellbeing centres
- The role of health therapists
- Toilet training
- Preparing for adulthood part 1 & 2
- Dental Hygiene and healthy eating



# Brent PARENT CARER FORUM CIC

Company no: 12218043

## We are looking for SEND Parent Champions

**We are the official strategy voice for Parent Carers with a child/YP with SEND 0-25 living in Brent. We are parent led and independent.**

**We want you to be our voice in your local community.**

We are looking for parent/carers who would be willing to volunteer 2-5 hours a week /month and meet with other parents telling them about services for children and young people with SEND such as:

- Telling parents about Brent Parent Carer Forum—official strategic voice in Brent
- Navigating Brents local Offer
- understanding how to access SEND services
- Childcare and parenting support
- Dads/mens groups
- Acting as Parent links at both mainstream and special schools

Or you could

- attend one of our focus groups with Brent LA or Health as a parent rep

## What are the benefits for you ?

- Training to assist you to move toward developing your confidence and skills
- Experience that will support you toward new goals and employment
- You will become better informed and equipped in your own role as parents
- You will receive a small remuneration, regular support and supervision

Any questions call 07852 101492 or email [admin@brentpcf.org](mailto:admin@brentpcf.org)

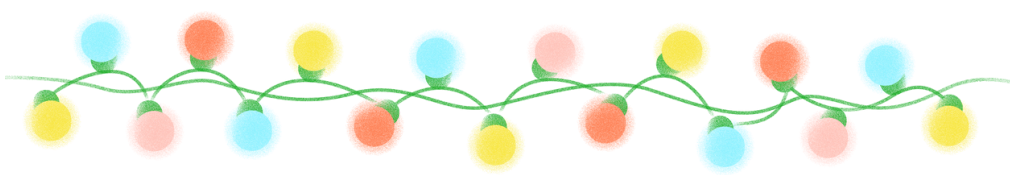
If your interested in becoming a parent champion /parent rep Briefing sessions

Thursday 7<sup>th</sup> March 7-8pm Being a parent champion and parent rep.

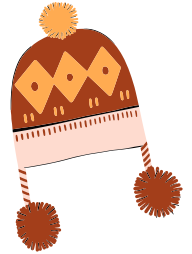
<https://www.eventbrite.co.uk/e/bpcf-what-is-a-parent-champions-or-rep-briefing-session-tickets-808076938877>



**Brent**



# Activities Newsletter



February 2024

Welcome to Brent Council's SEND Activities and Resources Newsletter. This newsletter will provide parents, carers and professionals information on activities and resources taking place in and around Brent which offers the opportunity for our children and young people to have fun, socialise and engage with the community.





## **DARE PLAYScheme**

SEND SPECIFIC PLAYScheme

The Village School, Kingsbury

Ages 3-19

February Half Term

Arts & Crafts, Games, Cooking, Sensory Play, Drama, Swimming & more



For more information on cost and booking please contact: [info@dareplayscheme.co.uk](mailto:info@dareplayscheme.co.uk)

Tel: 07721 857224 (available weekday working hours only)



### Junior Adventures Group Holiday Camp: Moberly Sports Centre (NW10 3NB)

Mon 12th Feb - Fri 16th Feb (8.30am to 5.30pm)

Ages 5-12

£38.55 /day (use code EXPLORE10 for 10% discount)

HAF spaces subject to availability

1:1 assistance available depending on location/staff availability.

Additional charge for a carer is £15 p/h.

Activities including; Super Sports, Fit Factor, Thrive Time, Learn Zone,

Wellness Zone, Creative Zone, weeks in focus, special events, swimming\* and much more!

For camp availability/bookings, please click [here](#)

Other camps available in surrounding areas see website for details.

For any queries, please contact:

[SENDCO@junioradventuresgroup.co.uk](mailto:SENDCO@junioradventuresgroup.co.uk)

[hello@junioradventuresgroup.co.uk](mailto:hello@junioradventuresgroup.co.uk)

0333 577 1533

### Junior Adventures Group Holiday Camp : Vale Farm Sports Centre

Ages 5-12yrs

Mon 12th Feb - Fri 16th Feb (8.30am to 5.30pm)

£37.65 per session (use code EXPLORE10 for 10% discount)

HAF spaces also available subject to availability (10:00 - 15:00)

1:1 assistance available depending on location/staff availability, please call them prior to booking for further information.

Additional charge for a carer is £15 p/h.

Activities including; Super Sports, Fit Factor, Thrive Time, Learn Zone, Wellness Zone, Creative Zone, weeks in focus, special events, swimming\* and much more!

For camp availability/bookings, please click [here](#)

For any queries, please contact:

[SENDCO@junioradventuresgroup.co.uk](mailto:SENDCO@junioradventuresgroup.co.uk)

[hello@junioradventuresgroup.co.uk](mailto:hello@junioradventuresgroup.co.uk)

0333 577 1533

\*Please note that these activities are subject to change and the use of facilities may vary.



\*Please note that these activities are subject to change and the use of facilities may vary.





Junior Adventures Group Holiday Camp: **Willesden**

**Sports Centre**

Ages 5-12yrs

Mon 12th Feb - Fri 16th Feb (8.30am to 5.30pm)

£39.50 per session (use code EXPLORE10 for 10% discount)

HAF spaces subject to availability

1:1 assistance available depending on location/staff availability, please call them prior to booking for further information.

Additional charge for a carer is £15 p/h.

Activities including; Super Sports, Fit Factor, Thrive Time, Learn Zone, Wellness Zone, Creative Zone, weeks in focus, special events, swimming\* and much more!

For camp availability/bookings, please click [here](#)

For any queries, please contact:

SENDCO@junioradventuresgroup.co.uk

hello@junioradventuresgroup.co.uk

0333 577 1533

\*Please note that these activities are subject to change and the use of facilities may vary.



Blue Ocean Waves Centre offers services like Music, Dance, Drama and Art for all abilities. Classroom based classes\* are currently held at Chalkhill Community Centre, Wembley.

\*Fees payable

Please click [here](#) for further information





### **Club Brent | Disability Sports Coach**

When: Saturdays (term-time only)

Time: 2.00pm - 4.00pm

Venue: **Willesden Sports Centre**,  
Donnington Road, London, NW10 3QX

Price: £4 Ages: 8 years and over

For more info please click [here](#)

### **Let's Unite for Autism**

SEN multi-sports session

Saturdays 12pm - 2pm based at

**Roundwood Community Centre in Harlesden.** The session will be multi-sport for young people aged 9-15 years of age

For more please click [here](#)

\*Parents are required to stay for the duration of the session to support their young person.



### **Sports Ability Sessions for 8+**

All inclusive sports sessions

Saturday from 3.00pm - 5.30pm

The cost per session is £3.00 children; £5.00 adult or £25.00 for 10 weeks (children) and £40.00 for 10 weeks (adult).

**Bridge Park Community Leisure Centre**, NW10 0RG

02089373730

Email: BRIDGEPARKCLC@brent.gov.uk

For more details click [here](#)

### **Keen London - Brent**

Our sessions (Wembley) run for 90 minutes and will involve a mixture of playground games, creative activities and outside nature play.

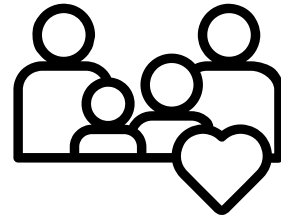
We currently support children with a wide range of additional needs who require varying levels of support.

Every Saturday during term time: Ages 5-11  
For more information and registration: click [here](#)





## Sessions at our Family Wellbeing Centres



For Families with a SEND child, activities for all the family. If you would like to attend please go online to register and book your place, see website below:

[www.brent.gov.uk/familywellbeingcentres](http://www.brent.gov.uk/familywellbeingcentres) or you can click [here](#)

### SEND Family time

#### Granville Plus Family Wellbeing Centre

Saturday 27th January 2024

Saturday 24th February 2024

from 10am - 12pm at

Granville Plus FWC

142 Carlton Vale, NW6 5HE

Click on link above to register/ book your place



### SEND Family Group

#### Willow Family Wellbeing Centre

Barnhill Road, Wembley, HA9 9DF

Saturday 27th January 2024

Time: 10am - 11.30am

Click on link above to register/ book your place



### SEND Family Group

#### Preston Park Family Wellbeing Centre

College Road, Wembley, HA9 8RJ

Saturday 24th February 2024

Time: 10am - 11.30am

Click on link above to register/ book your place







## **PARTYMAN WORLD OF PLAY**

Autism friendly /SEN Session  
(Wembley)

**When:** Sunday 28th Jan & 25th Feb

**Time:** 9am-10am

or

**When:** Thursday 1st Feb

**Time:** 6pm - 8pm

**Ages:** No age limit

**Cost:** Free\*

At all other times: £6 per child

& 1 free carer ticket

\*proof of disability is required e.g.

Yellow card, DLA letter

For more info, please visit [here](#)



## **FLIP OUT TRAMPOLINING**

Brent Cross

Every Saturday 9-10am (SEND Session)

£9 per person (Free for carers)

Suitable for all ages

For more information and bookings, please click

[here](#)

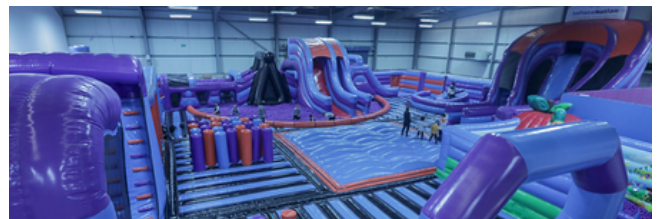
## **InflataNation**

Disability friendly sessions - London, NW9 6TH

These sessions are designed specifically for those people on the autistic spectrum & their families to enjoy.

Ages 4+ £13.50 per person (free for carers)

Click [here](#) for further information



## **OXYGEN FREEJUMPING TRAMPOLINING**

Acton

Peaceful Play (Autism and Disability friendly)

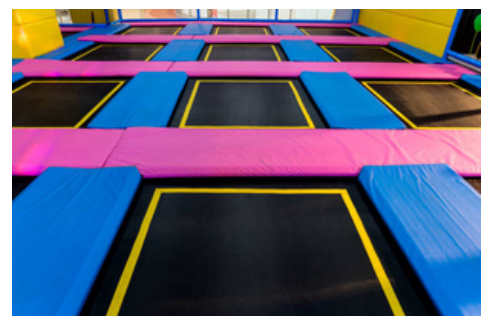
Term Time - Wednesday 3.00pm - 4.00pm

Sunday 5.00pm - 6.00pm

School Holidays: Sunday 5.00pm - 6.00pm

Ages 5+ £9.50 per person (Free for 1 carer)

For more information and bookings, please click [here](#)





**RSBC** have a range of activities available online including:

**Audio book club** for ages 8–25 yrs

**Sensory Story Time** 0–8 yrs

**Virtual Creative Session**

Suitable for Blind and Partially sighted young people and their families.

For further information please click [here](#)

### **Bright Beginnings (Online Early Years Group)**

– Sensory Play & Discussion with a Family Practitioner

A weekly online early years group for parents who have a blind or partially sighted baby or child between 0–4 years old!

For further details and to book please click [here](#)



### **SENSE Drumming to Music**

Activity via Zoom

Friday's from 2:00 pm – 2:30 pm

\*For more information and to book email: [Katie.Sawyer@sense.org.uk](mailto:Katie.Sawyer@sense.org.uk)

### **SENSE Exercise Through Dance**

Free virtual sessions

Saturdays 11am–11.45am

\*For more information and to book email: [Katie.Sawyer@sense.org.uk](mailto:Katie.Sawyer@sense.org.uk) or call or call 07500 706579





### **RSBC Boys Crew - online**

A fortnightly virtual session for young blind and partially sighted males aged 11-25 exploring a range of topics

**When:** Every other Tuesday starting from 30/01/2024 from 5pm to 6pm via Zoom  
For more details and to book click [here](#)

### **RSBC Sisterhood Group - online**

Sisterhood is a weekly online session for young blind and partially sighted women and girls aged 11-25

**When:** Every other Tuesday starting from 23/01/2024 from 5pm to 6pm via Zoom  
For more details and to book click [here](#)



### **VUE CINEMA**

Autism Friendly Screening, Harrow

LAST Sunday of the month: 10am

Free ticket for carers.

For more info/bookings, please visit- [here](#)

### **LEXI CINEMA - Kensal Green**

NW10 3JU

Offer relaxed and accessible screenings on an ad-hoc basis

Please click [here](#) for further information and updates on new screenings.

### **Cineworld Cinema - Wembley**

Autism friendly screenings on first Sunday of the month

04/02/24 at 11am - Aquaman & The Lost Kingdom

For more information and to book click [here](#)





## **Tower Bridge Relaxed Openings - 10/02/2024 am**

Perfect for people who prefer quieter spaces, such as those with Autism, Asperger's and anxiety, as well as their siblings, families and carers.

Tickets are £4.60\* for ages 5-15 and  
£9.20\* for 16+  
\*concession rates  
Accompanying carer goes free

British Sign Language tours available on the last Saturday of the month: ticket prices as above  
For more information and booking please click [here](#)



## **Natural History Museum**

Accessible Morning Visits to Wildlife Photographer of the Year  
**10.00-11.00 every other Wednesday and Saturday**

Disabled adult: £12.00 - £14.00

Disabled child: £7.25 - £8.50

Companion ticket: Free

Dates: 03 February, 07 February, 17 February, 21 February

Click [here](#) for further info and booking.

## **The Postal Museum - London**

Post Early (Relaxed event suitable for children & young people with Autism)

12 February 2024

Limited spaces (tickets £3.50 inclusive of 1 carer ticket) click

[here](#) for more info and to book



## **SENsory Sailors - National Maritime Museum - Free\* 10th February 2024**

Disabled children, children with additional needs and their families are invited to a monthly session at the [National Maritime Museum](#) led by disabled creatives.

**Date and Times:** Once a month on Saturdays | 11am-12.30pm

**Prices:** Free | Pre-booking required

\*spaces limited click [here](#) to book



### **Bubble Planet - Wembley**

**When:** Dates available throughout February 2024

**Age:** all ages welcome. Children under the age of 4 can visit free of charge. Children under the age of 14 must be accompanied by an adult.

**Price:** starting from £13.90 for children and £17.90 for adults

**Accessibility:** the venue is easily accessible for everyone. For more information please check the [FAQs](#).

For people with disabilities pay the reduced price, while the accompanying person is entitled to free admission.

**Location:** 22 Fulton Rd, Wembley HA9 0TF, UK

### **Fun with Trains - Harrow**

**When:** 11/02/24

**SEN session - 12.50pm - 1.50pm**

**Where:** Harrow Leisure Centre Christchurch Avenue  
Harrow HA3 5BD

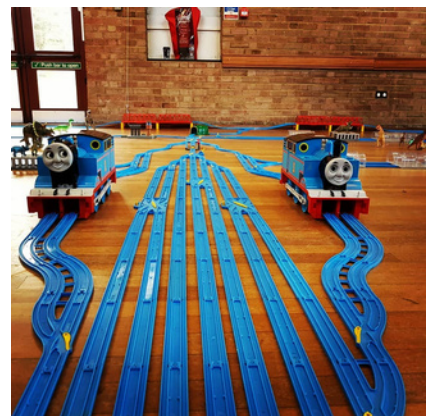
**Ages:** 18 months - 18 years

**Cost: £9** (includes booking fee)

Free entry for adult carer

Bring your kids along to play with our giant train tracks!

Tunnels, stations, garages and bridges are all part of our tracks, so many things for children to interact and play with, and plenty of space to enjoy watching the trains race round the tracks - plus without the hassle of packing it all away at the end of the day!



## THE BRENT PLAY ASSOCIATION 17+

### Wembley

We offer a varied programme of activities which includes music, dance, drama, IT, arts and crafts, yoga, sports, special events and off-site activities to places of interest.

For further information on activities, please email: [info@brentplay.org](mailto:info@brentplay.org)  
Visit [here](#) for more information



### Action Space Art Project in Barham Park

Free studio sessions for young people and adults with learning disabilities to develop and pursue their artistic talent.

Age: 16-30 years old

Every Thursday, 12.30 - 3.30pm

For booking details see local offer click [here](#) for the link.

**Brent Mencap** are the leading learning disability charity in Brent but did you know they also offer a range of activities as well?  
Click [here](#) more info



### SENSE Virtual Buddying befriending service -Free

Make a friend online

Sense's Virtual Buddying is for disabled people of any age in the UK. Chat online or on the phone with your buddy once a week from the comfort of your home.

Click [here](#) for more details



### **FREE TRACK SESSIONS**

AGED 19-25 WITH A PHYSICAL OR LEARNING  
DISABILITY?

Come to our dedicated run, jump, throw sessions.  
Just for you on Fridays from 11am to 12.30pm at the  
WILLESDEN SPORTS CENTRE.

Email [GRACE.VEYS@TRACKACADEMY.CO.UK](mailto:GRACE.VEYS@TRACKACADEMY.CO.UK) or call  
07399 229665 to book.

### **CHANGES NIGHTCLUB**

The Red Brick Cafe, The Wealdstone Centre, Harrow, HA3 7AE  
Changes is Harrow's first integrated nightclub for people with  
learning difficulties & their friends.

Ages 18+

Cost: £5

Wednesday 14th February 2024 (7pm - 10pm)

For more dates/events, please click [here](#)



We would love to hear your  
feedback regarding short break  
services, please scan QR code for  
questionnaire:



# Brent Parent Carer Forum

## Community Interest Company

Company No: 12218043

Together we can make change happen



## Coffee and Chat SEND drop in Mornings



*Coffee & Chat*

**Does your child have Special Educational Needs and/or Disabilities (SEND)?**

*You are warmly welcome to drop on Tuesdays*

**Starting Tuesday 30<sup>th</sup> January 2024 10-30-1pm**

**Young Brent Foundation**

**ACAVA**

**Unit 8 (ground floor)**

**Barham Park- 660 Harrow Road**

**HAO2HB.**

**Your involvement, views and voice are important.**



(the door bell doesn't work sometimes so if we don't answer give us a call 07305145167)

For Further information Contact Mirela on [admin@brentpcf.org](mailto:admin@brentpcf.org) or Carol 07852101492.





**BPCF CIC**

**Company No: 12218043**

**Join us on**

**Thursday 1<sup>st</sup> February 10-12.30pm -in person**

Chalk hill Community Centre

Allen Suite

The Welford Centre,

113 Chalkhill Road

Wembley Park

HA9 9FX

Join us for coffee and light refreshments.

For an interactive informal session

## **Health Services**

**Norma Johnson**

**Designated Clinical Officer for Brent will be joining us**

**We would like to hear from you.**

- **What are the difficulties do you experience accessing health services from GPS to more specialist health services?**
- **Do you know where to go and how to access services?**
- **How can we improve information and sign posting?**

Please let us know about any issues you have been having during these difficult times be it in education, social, health and we can try and help and get answers for you.

**Your involvement, views and voice are important.**

Mobile 07305 145 167 or 07852101492

e-mail: [admin@brentpcf.org](mailto:admin@brentpcf.org)

[www.brentpcf.org](http://www.brentpcf.org)

Follow us on

 Facebook: Brentpcf

 Instagram: Brentparentcarers



**BPCF CIC**

**Company No: 12218043**

**Join us on**

**Thursday 22<sup>nd</sup> February 10-12.30pm -in person**

Chalk hill Community Centre

Allen Suite

The Welford Centre,

113 Chalkhill Road

Wembley Park

**HA9 9FX**

**We are delighted that Cllr Muhammed Butt – Leader of Brent Council  
will be joining us.**

We hope other Brents Cllrs and MPS who have been invited will also be able to join us

**We would like to hear directly from you.**

**AS we approach a general election year in what are different times  
for SEND families we invite you to join us to talk about the issues and  
areas that matter to you and what difficulties you are experiencing  
or even examples of positive experiences**

Light refreshments will be available.

Please let us know about any issues you have been having during these difficult times be it in education, social, health and we can try and help and get answers for you.

**Your involvement, views and voice are important.**

Mobile 07305 145 167 or 07852101492

e-mail: [admin@brentpcf.org](mailto:admin@brentpcf.org)

[www.brentpcf.org](http://www.brentpcf.org)

Follow us on

 Facebook: Brentpcf

 Instagram: Brentparentcarers



Family Learning

Join the Deaf Parents After School Club  
to get support for your children,  
with their homework.

Contact Brent Start on  
[brent.start@brent.gov.uk](mailto:brent.start@brent.gov.uk)

or pop in to

**The Willow**  
**Family Well-being Centre**

Barnhill Road Wembley HA9 9DF

**Date: Mondays**

(term time only)

**Time: 4.30-6.30pm**

020 8996 0000